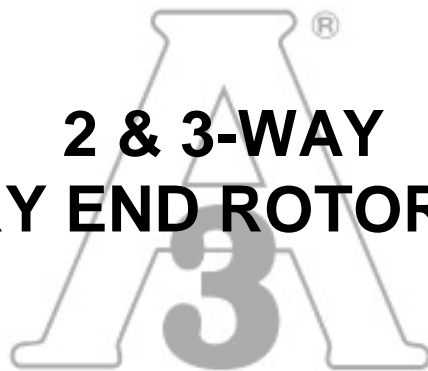




**2 & 3-WAY
SANITARY END ROTOR VALVES**



Quality Controls, Inc.


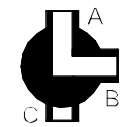





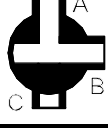
200 TILTON ROAD

NORTHFIELD, NEW HAMPSHIRE 03276

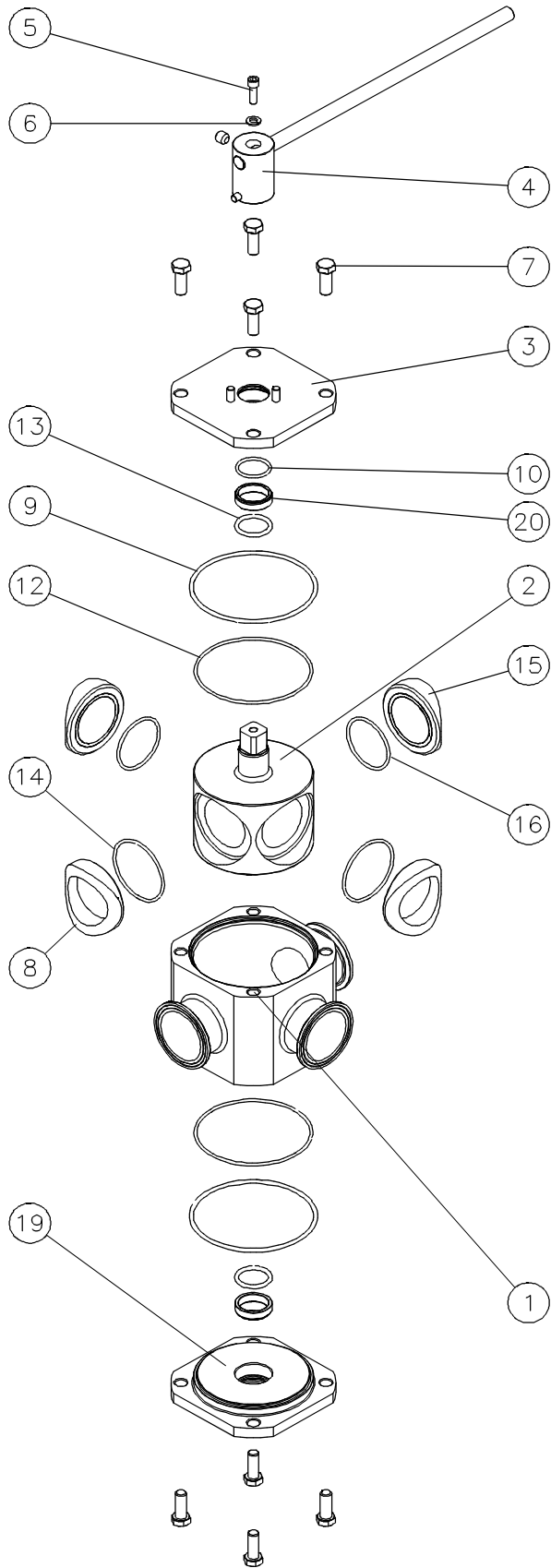
PHONE: (603) 286-3321 • FAX: (603) 286-7648 • WEB: www.qcivalves.com

Tired of using sanitary valves that have low operating capabilities (25 psi and 100°F.), and still leak? Tired of using valves in a sanitary service that have many parts, are difficult to clean, require adjustments frequently, and are costly to repair? Tired of using valves that have reduced port or flow obstructions? Then QCI offers an alternative solution for your current valving needs; QCI is developing a new line of 2 and 3-way 3A approved valves per specification number 51-01. These valves are being developed as an alternate to the plug and shutter type valves currently used in the sanitary industry. The QCI 3A Rotor valve has many features and benefits above the plug and shutter type valves, which include:

- Full port, no flow obstructions.
- Higher pressure and temperature capabilities.
- Easily cleaned and maintained for CIP service.
- Low torque, easy to manually operate or actuate.
- Dual o-ring stem seal for increased sealing reliability.
- Dual trunnion rotor design, great for use in high-cycle filling machine applications.
- Replacement parts available that are affordable, and as easy to install as the valve is to clean.
- Made in the USA by a manufacturer with over 40 years experience in sanitary valving.
- Available in the following Flow Patterns:

PORTING	2-WAY	3-WAY	
	S-	L-	T-
Position 1			
Position 2			
Position 3	N/A	N/A	
Position 4	N/A	N/A	
<p>Notes: 1.) Starting with Position #1, the positions are shown in 90° increments, clockwise rotation.</p> <p>2.) The QCI Multi-port Valves are designed for flow diversion, one common inlet/multiple outlets. For applications other than this, consult factory.</p>			





1" THRU 4" 3A VALVE
3 WAY, ST STL, L ROTOR

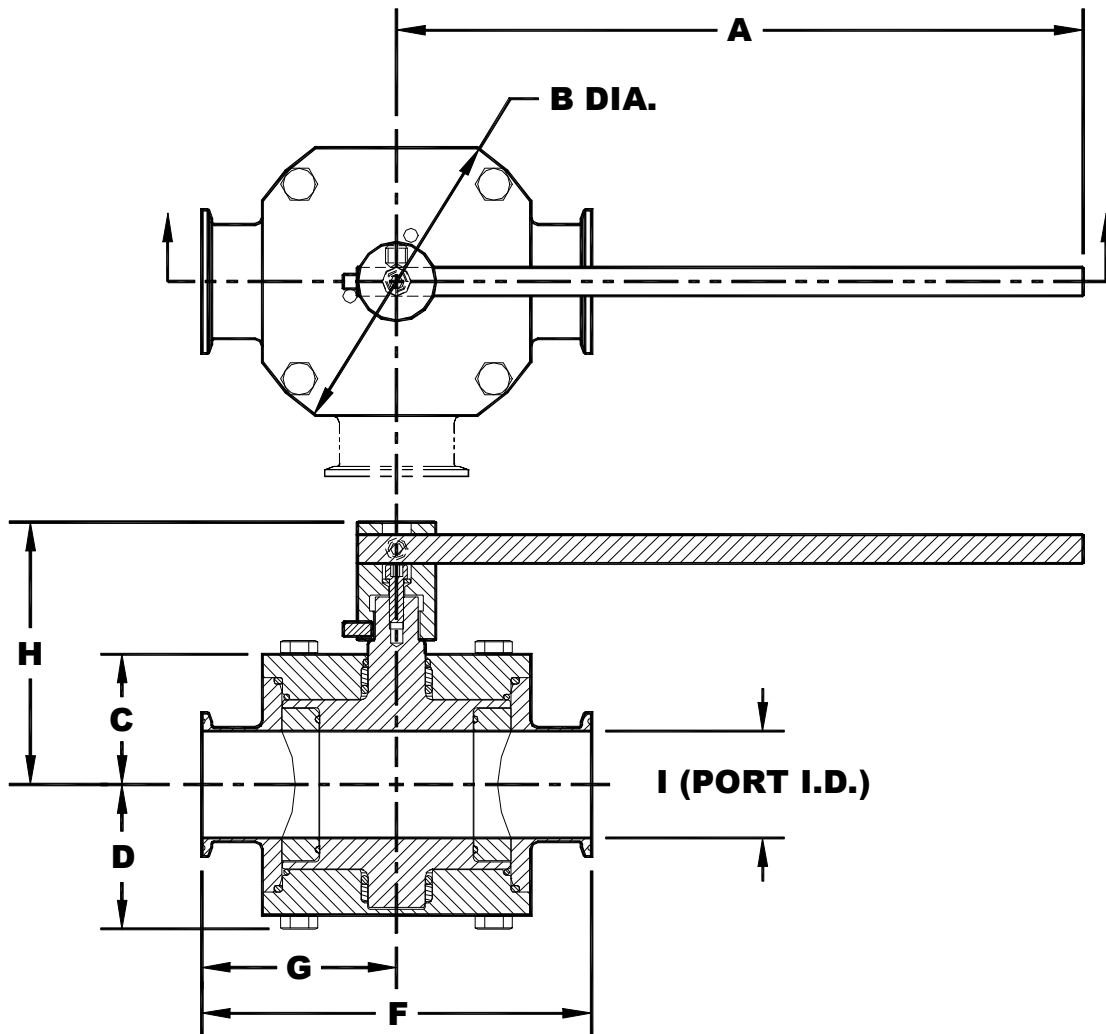
NO.	QTY.	DESCRIPTION
1	1	BODY
2	1	ROTOR
3	1	TOP COVER
4	1	HANDLE
5	1	HANDLE WASHER
6	1	SOCKET HD CAP SCREW
7	8	HEX HEAD BOLT
* 8	2	SEAL, PORTED
* 9	2	O'RING, BODY
* 10	1	O'RING, STEM
11	N/A	N/A
* 12	2	WASHER O'RING
* 13	2	O'RING, COVER
* 14	2	O'RING, PORTED SEAL
* 15	2	SEAL, SOLID
* 16	2	O'RING, SOLID SEAL
17	N/A	N/A
18	N/A	N/A
19	1	BOTTOM COVER
* 20	2	ROTOR BEARING

* RECOMMENDED SPARE PARTS
(VALVE REPAIR KIT)



QUALITY CONTROLS, INC.

200 TILTON ROAD
NORTHFIELD, NH 03276



SANITARY CLAMP END ROTOR VALVES, 2 & 3-WAY

VALVE SIZE	A	B	C	D	F	G	H	I
								S-, L-, T-
1"	9.00	3.72	1.78	1.94	4.56	2.28	4.09	.870
1½"	9.00	4.59	2.03	2.24	5.81	2.90	4.34	1.370
2"	9.00	5.47	2.28	2.52	6.81	3.40	4.59	1.870
2½"	18.00	6.72	2.78	3.11	8.25	4.12	5.97	2.370
3"	18.00	7.97	3.03	3.36	9.44	4.72	6.22	2.870
4"	24.00	9.47	3.53	3.94	13.06	6.53	6.72	3.834

Dimensions may vary due to design changes. For exact dimensions, contact factory.



Valve Ordering Information

1.0 = 1" 1.5 = 1½" 2.0 = 2"	2.5 = 2½" 3.0 = 3" 4.0 = 4"	2 = 2-Way 3 = 3-Way	2 = 316 SS 4 = Spec. Alloy (3)	M = Machine Finish (Std.) (150 Grit / 32 Ra) P = Polish (240 Grit / 16Ra)	B = Buna E = EPDM S = Silicone T = TFE Encapsulated Silicone V = FKM 6 = Special Material
VALVE SIZE	NUMBER OF PORTS	VALVE MATERIAL	VALVE FINISH	O-RING MATERIAL	

3 A 2 . 0 3 2 M V T - V T C M

3A Sanitary Valve Series

Bill of Materials Number
(Assigned by QCI) (2)

ROTOR TYPE	SEAL MATERIAL	END CONNECTIONS	OPERATION	REPAIR KIT/SPECIAL DESIGN DESIGNATOR (IF REQUIRED) (1)
S- = Straight Through L- = Right Angle T- = 3-Port Combination	V = Virgin TFE R = Mineral Filled TFE D = Acetal Z = Special Material (3)	TC = Tri-Clamp ® CB = I-Line ® (female) SP = Special Design (to specify) (3)	M = Manual Lever L = Less Handle A = Actuated (By Factory)	K = Repair Kit (to be used only when ordering a repair kit) (1) X = Special Design (to be specified)

Notes: (1) When ordering a standard valve, leave this and the following spaces blank.
 (2) When ordering a standard repair kit, leave these spaces blank.
 (3) The use of the special material/type codes will require the valve to be a special design.
 (4) Tri-Clamp ® is a registered trademark of The Ladish Company, Tri-Clover Division. I-Line ® is a registered trademark of Cherry Burrell Corp.

Distributed By:



Quality Controls, Inc.
 200 Tilton Road
 Northfield, NH 03276
 Phone: (603) 286-3321
 Fax: (603) 286-7648
 Web: www.qcivalves.com